

## RAWLNUT Flexi Plug

Easy-to-install plug giving exceptional resistance to vibration and corrosion.



### Product information

#### Features and benefits

- Resistant to vibration and corrosion.
- Ideal for unknown substrates and irregular or oversized holes.
- Rubber flange sets flush at the surface which guarantee tight fixing.
- Made from synthetic rubber for more severe corrosion environment.
- Bonded brass insert.

#### Applications

- Lighting
- Shelves
- Trunking
- Cable trays
- Electrical fittings
- Brackets, grips and hooks
- Pictures

#### Base materials

##### Suitable for use in

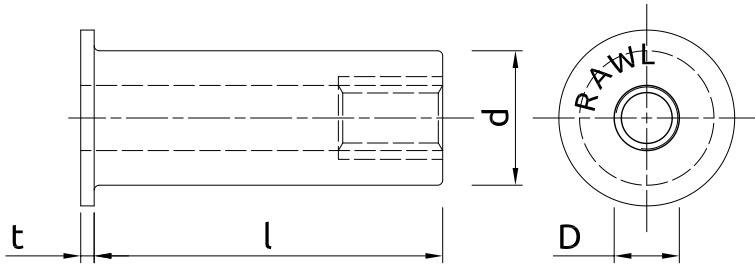
- Solid Brick
- Hollow Brick
- Vertically-perforated Clay Block
- Lightweight Concrete Block
- Hollow Lightweight Concrete Block
- Aerated Concrete Block
- Plasterboard
- Chipboard
- Oriented Strand Board
- PVC Profile

### Installation guide

1. Drill appropriate hole. For solid materials, drill hole to length of screw and fixture thickness. Clean out hole and remove sharp edges to avoid damaging fixing.
2. Insert the fixing up to its flange.
3. Place fixture in position. Insert screw and tighten to compress sleeve and form a secure fixing. Do not overtighten.
4. Work equally well in uniform or irregularly shaped holes.

## Lightweight Fixings

### Product information



Size	Product Code	Plug			Screw
		Diameter	Length	Thickness	Diameter
		d	l	t	D
[mm]					
M4	R-RNT-M4/12	8	12.6	1.4	4
	R-RNT-M4/24	8	24	1.2	4
M5	R-RNT-M5/14	10	14.1	1.3	5
	R-RNT-M5/26	10	26.1	1.3	5
	R-RNT-M5/40	10	39.8	1.3	5
M6	R-RNT-M6/16	13	16	1.3	6
	R-RNT-M6/27	13	26.7	2	6
	R-RNT-M6/35	13	35	1.3	6
	R-RNT-M6/50	13	50	1.2	6
M8	R-RNT-M8/28	16	27.9	5	8
	R-RNT-M8/30	18	30	1.2	8
	R-RNT-M8/50	18	50	2	8
M10	R-RNT-M10/55	20	55	1.3	10
M12	R-RNT-M12/80	24	76.5	1.3	12

### Product commercial data

Product Code	Plug	Quantity [pcs]			Weight [kg]			Bar Codes
	Diameter [mm]	Box	Outer	Pallet	Box	Outer	Pallet	
R-RNT-M4/12	8	50	900	21600	0.07	1.28	60.7	5010445090936
R-RNT-M4/24	8	50	900	21600	0.30	5.4	159.6	5010445091230
R-RNT-M5/14	10	50	900	21600	0.12	2.1	79.7	5010445091841
R-RNT-M5/26	10	50	900	21600	0.30	5.4	159.6	5010445092244
R-RNT-M5/40	10	50	900	21600	0.30	5.4	159.6	5010445093104
R-RNT-M6/16	13	50	900	21600	0.20	3.5	114.2	5010445093555
R-RNT-M6/27	13	50	900	21600	0.30	5.4	159.6	5010445093852
R-RNT-M6/35	13	50	900	21600	0.32	5.8	168.2	5010445094156
R-RNT-M6/50	13	50	900	21600	0.48	8.6	235.2	5010445094378
R-RNT-M8/28	16	50	800	19200	0.51	8.2	225.8	5010445094736
R-RNT-M8/30	18	50	800	19200	0.60	9.6	260.4	5010445094750
R-RNT-M8/50	18	50	900	21600	0.78	14.0	367.0	5010445094736
R-RNT-M10/55	20	25	450	10800	0.70	12.6	332.4	5010445095948
R-RNT-M12/80	24	20	360	8640	0.85	15.3	398.1	5010445096549